

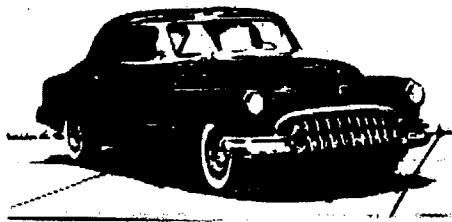
EXHIBIT G TO NM PRC APPLICATION FOR CERTIFICATE

1203 E Santa Fe Ave.

Grants, NM 87020

PH: (301) 795 5205

Genuine Services, LLC



NEW MEXICO

TARRIF COVER SHEET

Genuine Services, LLC

CONTACT INFORMATION:

EYOEL S. NATNAEL

EMAIL: topcareservicesllc@gmail.com

PHONE: (301) 795 5205

DESCRIPTION OF SERVICE:

PROVIDING NON-EMERGENCY MEDICAL TRANSPORT WITHIN LEGAL
LIMITS IN THE STATE OF NEW MEXICO.

**Genuine Services LLC
New Mexico Statewide
Non-Emergency Transport**

| Services Rendered | Rates |
|--|---|
| Non-Emergency Transport with standard vehicle | \$1.68/mile- \$230.00 max per one way trip; unit= 1 mile |
| 1 Physician Approved Family Member with standard vehicle | \$1.68/mile - \$230.00 max per 1-way trip; unit=1 mile |
| Physician Approved 2 nd to 4 th Family Member with standard vehicle | \$1.68/mile- \$115.00 max per 1-way trip; unit= 1 mile |